

WASHINGTON

FISCAL MANAGER

\$66,269 - \$86,445

Plus Excellent Benefits

Apply by

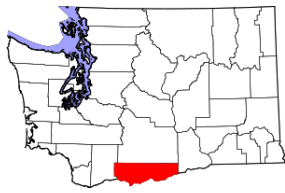
November 22, 2020

(First Review, Open Until Filled)

PROTHMAN



Klickitat County, Washington



Located in south central Washington, Klickitat County lies at the junction where the Columbia River Gorge cuts through the eastern slopes of the Cascade Mountains with expansive farms and wheat fields, vineyards, timberland, and magnificent Mt. Adams as a backdrop. The county seat, historical Courthouse and the largest city is located in Goldendale.

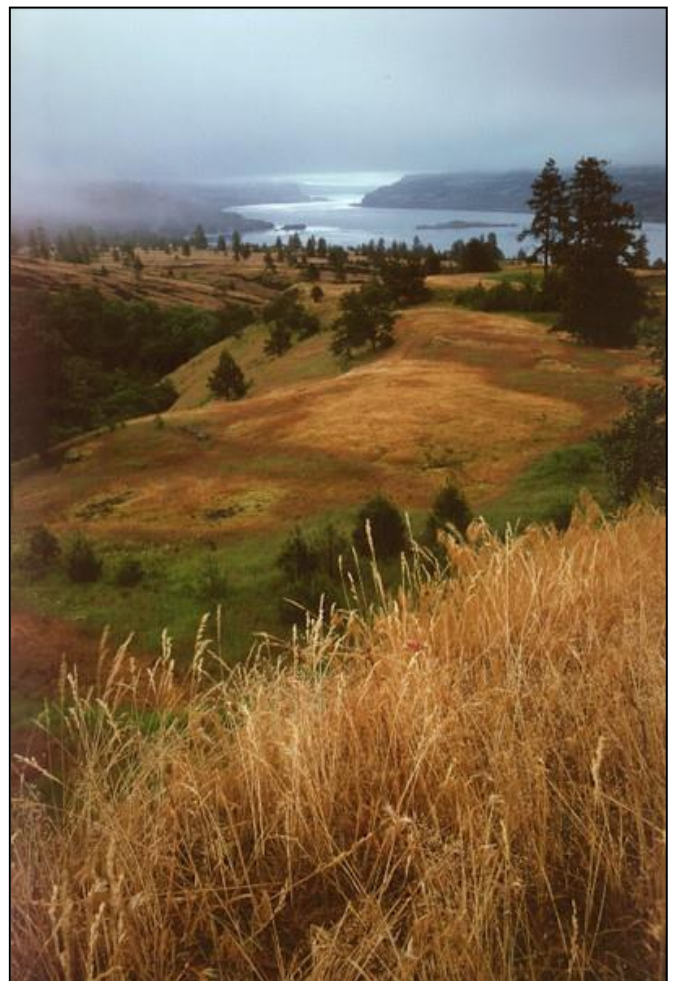
Encompassing 1,908 square miles, the County's nearly 22,000 residents reside in the cities of Goldendale, White Salmon and Bingen, and unincorporated communities of Bickleton, Centerville, Dallesport, Firwood, Glenwood, Klickitat, Lyle, Maryhill, Roosevelt, Trout Lake, and Wishram. Klickitat County offers a wide variety of geological and natural features and is well known for its miles of whitewater streams, numerous lakes, the Columbia River, and the Gifford-Pinchot National Forest. The County is also home to the Klickitat Wildlife Management Area and Conboy Lake National Wildlife Refuge.

With a mild year-round climate, the area is the perfect place to take advantage of an abundance of outdoor recreational activities from fishing and hunting, to whitewater rafting, windsurfing, hiking, biking, horseback riding, cross country skiing, snowmobiling, and berry and mushroom picking. Scenic tours provide opportunities to thousands of travelers and visitors to the Columbia River Gorge and the Cascade Mountains, while an expanding winery and grape growing industry offers many award-winning wines at several tasting rooms that are open to the public. The County also offers a wide variety of accommodations, attractions, and historical landmarks including the Maryhill Museum, Stonehenge, Goldendale Observatory, numerous restaurants, and beautiful mountain views of Mt. Hood and Mt. Adams.

Visitors and residents also will find that Klickitat County's canyons and vistas, evergreen forests, scenic waterfalls, wildflowers, berry fields, ranchlands, sage-covered hillsides, river rapids, rodeos, festivals, and for those who seek it, seclusion, are among the best in the U.S. Being a rural close-knit community, Klickitat County is a glorious place to call home, raise a family, and be employed.

THE ORGANIZATION

Klickitat County is governed by a three-member Board of Commissioners serving overlapping four-year terms, with each Commissioner representing one of three districts. The Commissioners serve as the Executive Branch and perform legislative and quasi-judicial functions of the County. The Board of Commissioners is responsible for approving ordinances, adopting the County budget, setting standards for the use of County property, and appointing non-elected officials, boards, commissions, and committees. In 2020 the County started construction on a new County Services Building to combine departments currently housed in 4 annexes, making it more accessible to the community. The County has two other services buildings; the Pioneer Center in White Salmon, and the Courthouse in the county seat, Goldendale. Klickitat County and its employees' mission is to provide quality government services to the public and to ensure the performance of quality work which will be accomplished earnestly, openly, and professionally.



Klickitat County employs approximately 250 FTE's and operates on a 2020 budget of \$62,029,832 including a General Fund Budget of \$17,767,333. County Departments and Elected Officials Offices include: Adult Probation Services, Assessor, Auditor, Building Inspection and Compliance, Civil Service, Commissioners, County Clerk, East and West District Courts, Economic Development, Emergency Management, Human Resources and Administrative Services, Juvenile Department, Natural Resources, Planning, Prosecuting Attorney, Public Health, Public Works, Senior Services, Sheriff, Solid Waste, Treasurer, Veteran Services, Weed Control, WSU Extension Services, and Superior Court.

THE POSITION

Under the general direction of the Director of Human Resources and Administrative Services, the Fiscal Manager maintains a close working relationship with the County Auditor, County Treasurer and all elected officials and appointed department directors. In conjunction with the County Auditor, the Fiscal Manager facilitates the preparation of the County's annual budget development process according to County policies and direction of the Board of County Commissioners and analyzes financial data to identify trends and forecast or calculate costs for budget purposes.

The Fiscal manager also prepares technical and complex budget-related reports for the purpose of providing strategic recommendations and counsel to the BOCC, elected officials and department heads. For a full job description, please view the attachment found [here](#).

OPPORTUNITIES & CHALLENGES

1. Klickitat County is financially sound with healthy reserves of \$23,380,149. The budget has been very healthy since 2010 when the County downsized from the last economic downturn and continues to look solid for the next couple of years with the healthy reserves. With the help of the Fiscal Manager, the Board of County Commissioners will need to fine tune the priorities as reserves are being tapped currently for capital projects - mainly the new building and the General Fund has drawn on more fund balance than is sustainable for the long term. In short, the budget is in good shape and the Board recognizes the need to reset some of their priorities for the upcoming budgets.

2. While the county is currently in a financial position to effectively deal with the Covid-19 pandemic and maintain current priorities the Fiscal Manager will be required to maintain a collaborative style of fiscal oversight to insure sustainable fiscal resources for the future.

3. Traditional sources of revenue, as well as non-traditional sources such as the approximate \$9,500,000 annual County revenue generated from the Republic Services Roosevelt Regional Landfill, provide Klickitat County predictable and reliable sources of revenue. Future economic development activities such as an innovative pump storage facility, IT server farm, solar energy projects, and more offer future potential revenue bright spots.

4. In addition to steady revenue sources, the County also has significant untapped tax options which are not anticipated to be needed but are available if the public chooses. Some of these can be approved by the Board of County Commissioners without a vote of the people, though many can only be enacted with voter approval.

IDEAL CANDIDATE PROFILE

Education and Experience:

A bachelor's degree in accounting, finance, economics or a related field and five (5) or more years of professional experience in government finance, accounting, auditing, analysis, design and planning of local government finance, budget or budget management is required. A CPA is preferred, along with an advanced degree in economics, finance, public administration, accounting or a related field. Candidates must have or obtain a valid Washington State driver license by time of hire. For full qualifications, please view the job description found [here](#).



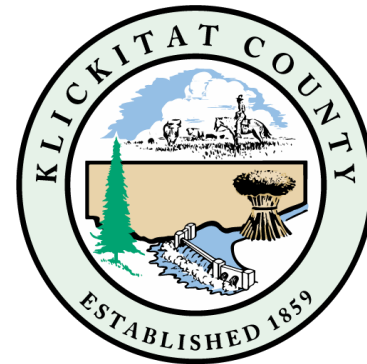
Necessary Knowledge, Skills & Abilities:

- Working knowledge of financial computer systems including database administration and working with vendors, technical staff and end users to maintain the county’s financial system; troubleshoot, resolve issues and configure or revise processes and procedures.
- Knowledge of one or more of the following: Principles, methods and terminology related to governmental budgeting; 2CFR 200; federal, state and local statutes; Generally Accepted Accounting Practices (GAAP); Financial Accounting Standards Board (FASB) pronouncements; Generally Accepted Auditing Standards (GASB), Budgeting, Accounting and Reporting System (BARS), and other pronouncements of nationally recognized accounting and auditing organizations.
- In-depth understanding of the interfaces of codes and regulations applicable to budgeting; and financial accounting/reporting and the ability to interpret complex financial data.
- Ability to effectively communicate budget related issues and processes to diverse groups throughout the organization.
- Ability to research, analyze, evaluate and construct recommendations and plans for new budget service delivery methods, budget procedures, and budget techniques.
- Ability to track, identify and review legislation that may impact the county budget and other financial influences.

COMPENSATION & BENEFITS

- **\$66,269 - \$86,445 DOQ**
- Medical, Vision and Dental with 100% employer paid contributions for employee only and 84% contributions for dependent coverage
- Health Savings Account
- Life Insurance/AD&D
- Long-term Disability Insurance
- Washington State PERS Retirement System
- Sick and Vacation Leave
- 11 Paid Holidays
- Optional Flexible Spending Account

**To learn more, please visit:
www.klickitatcounty.org**



Klickitat County is an Equal Opportunity Employer. All qualified candidates are strongly encouraged to apply by **November 22, 2020**. (First review, open until filled), Applications and materials will only be accepted electronically. To **apply online**, go to www.prothman.com and click on "**Open Recruitments**" followed by "**Fiscal Manager – Klickitat County, WA**" and follow the directions provided, visit www.governmentjobs.com/careers/klickitatcounty, or click [here](#).



www.prothman.com

371 NE Gilman Blvd., Ste 310
 Issaquah, WA 98027
 206.368.0050